

MARQUES & JORDY

London

I HAVE A

DREAM...

TO CREATE

LOVE

THROUGH

DESIGN

F RESIDENCE & F RESORTS

- LOW RISE -



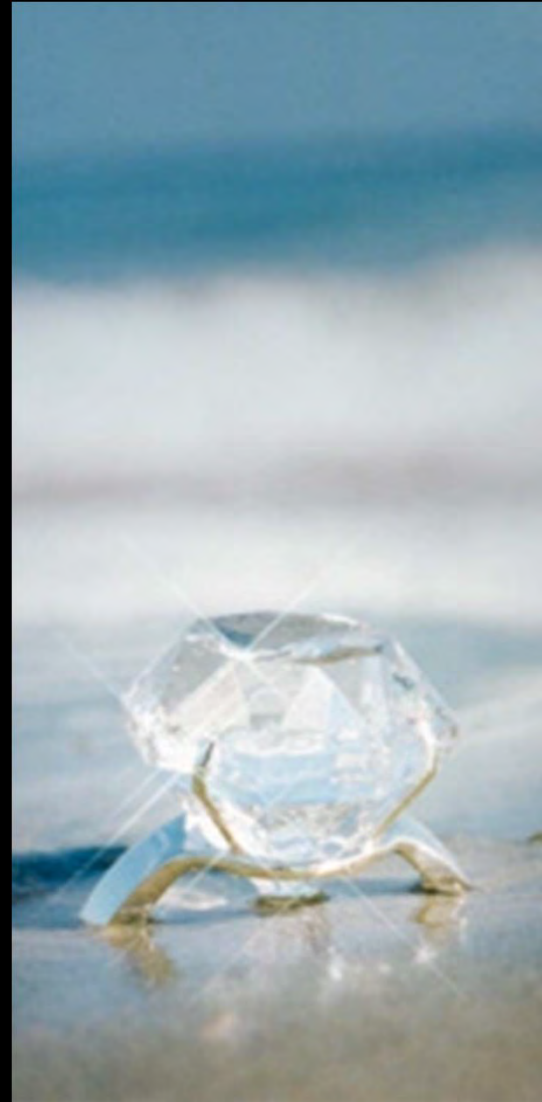
M&J
MARQUES & JORDY

FASHION DIAMOND CABANAS



Concept – diamond in the sea

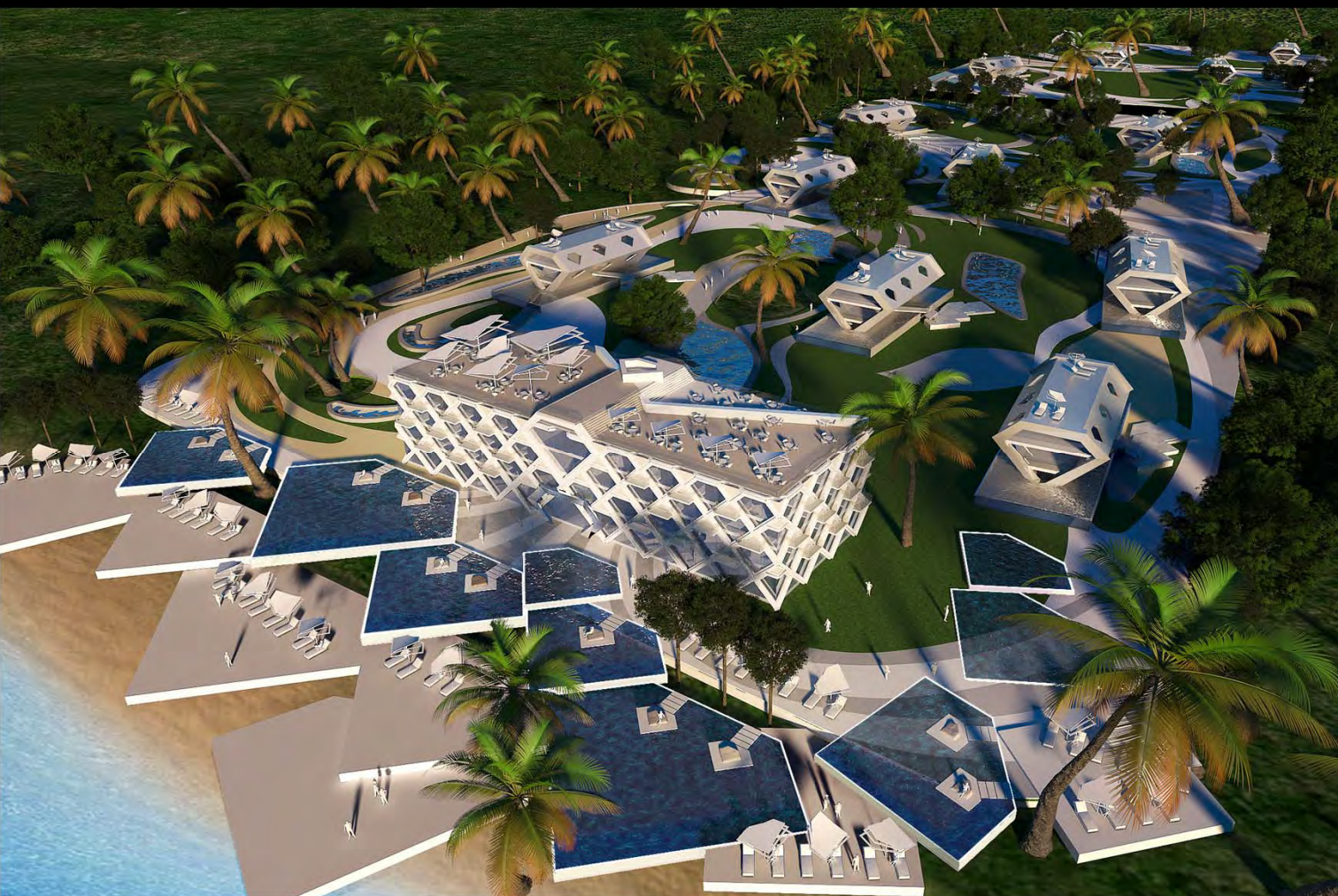
M&J
MARQUES & JORDY





Resort with central building and Fashion Diamond Cabanas

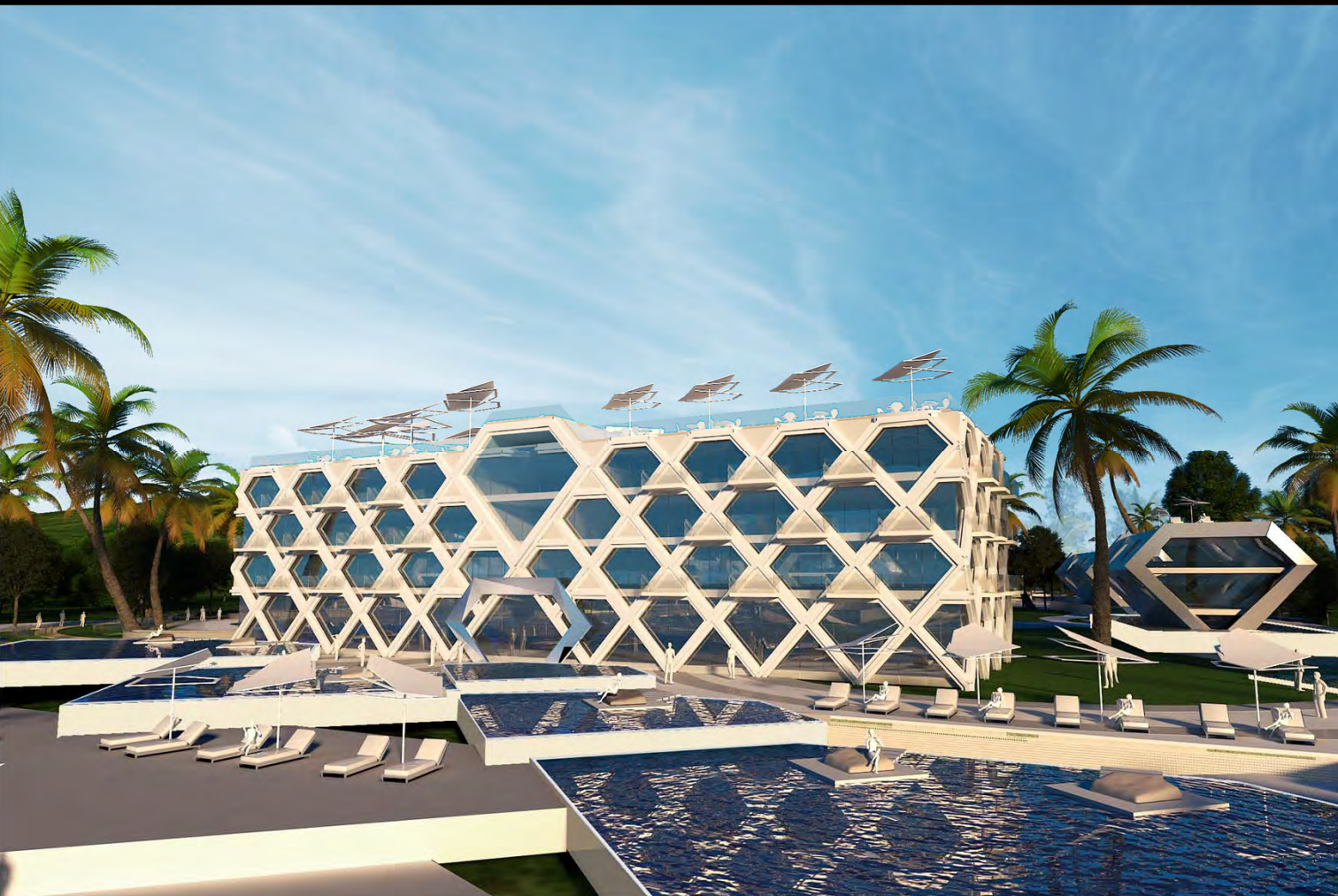
M&J
MARQUES & JORDY





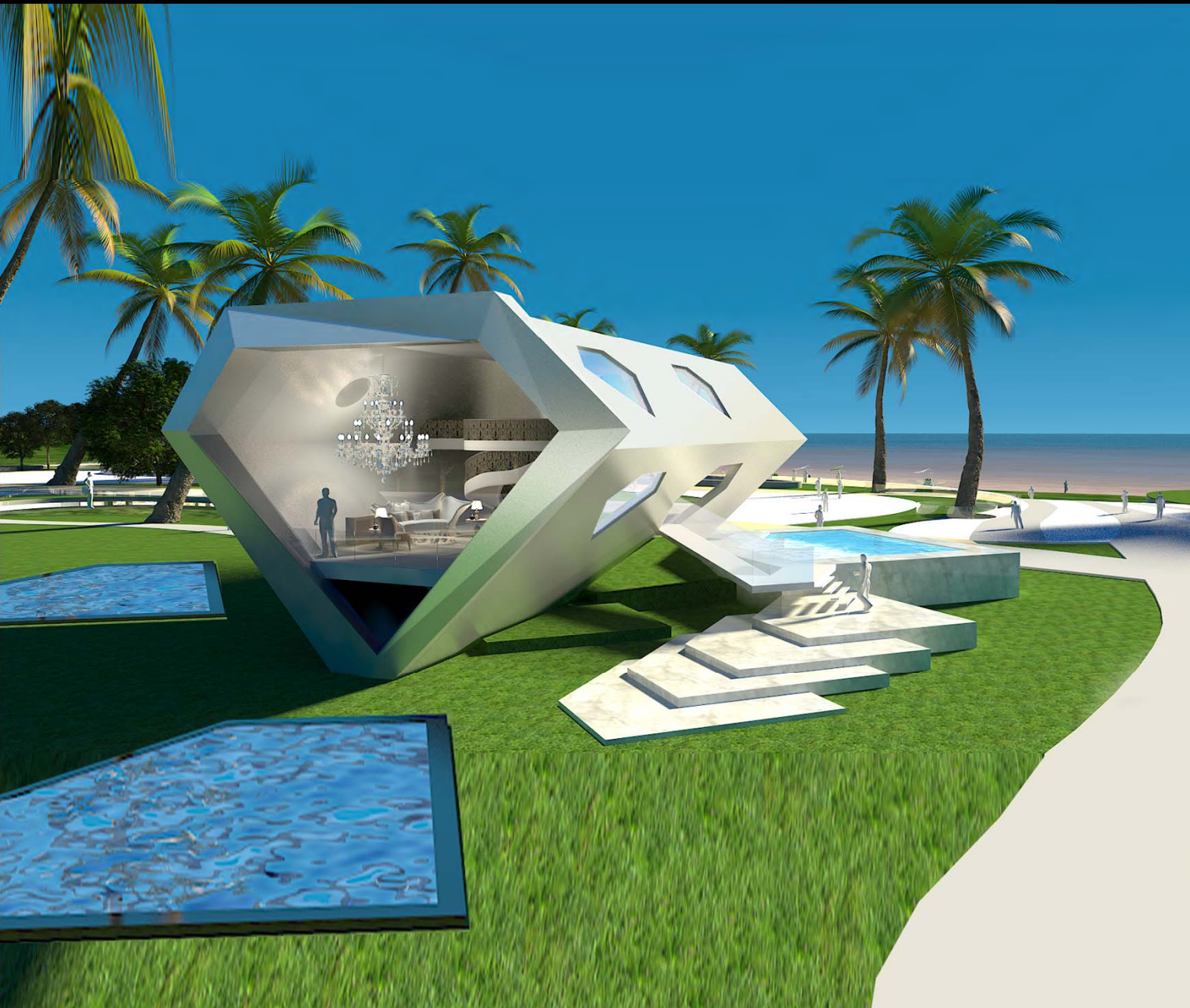
Resort with central building and Fashion Diamond Cabanas

M&J
MARQUES & JORDY





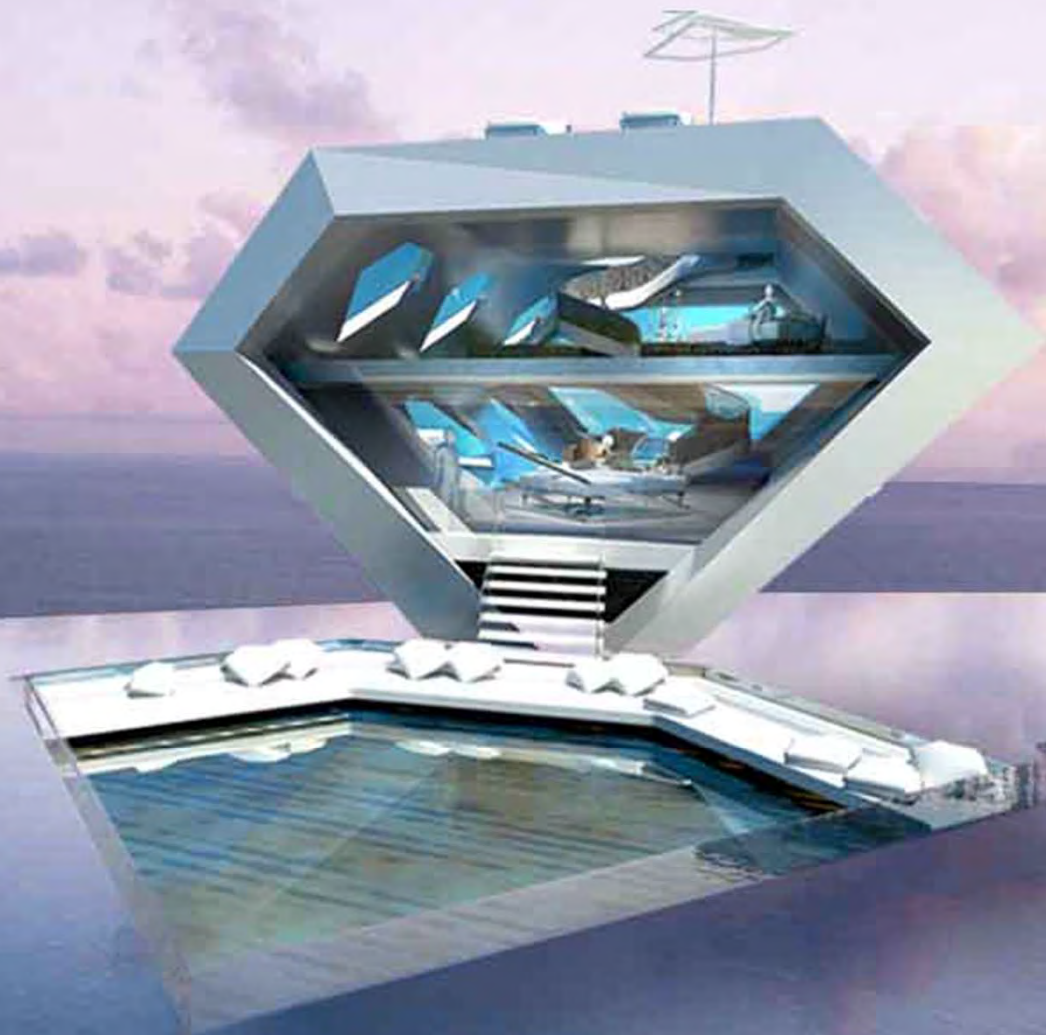
M&J
MARQUES & JORDY





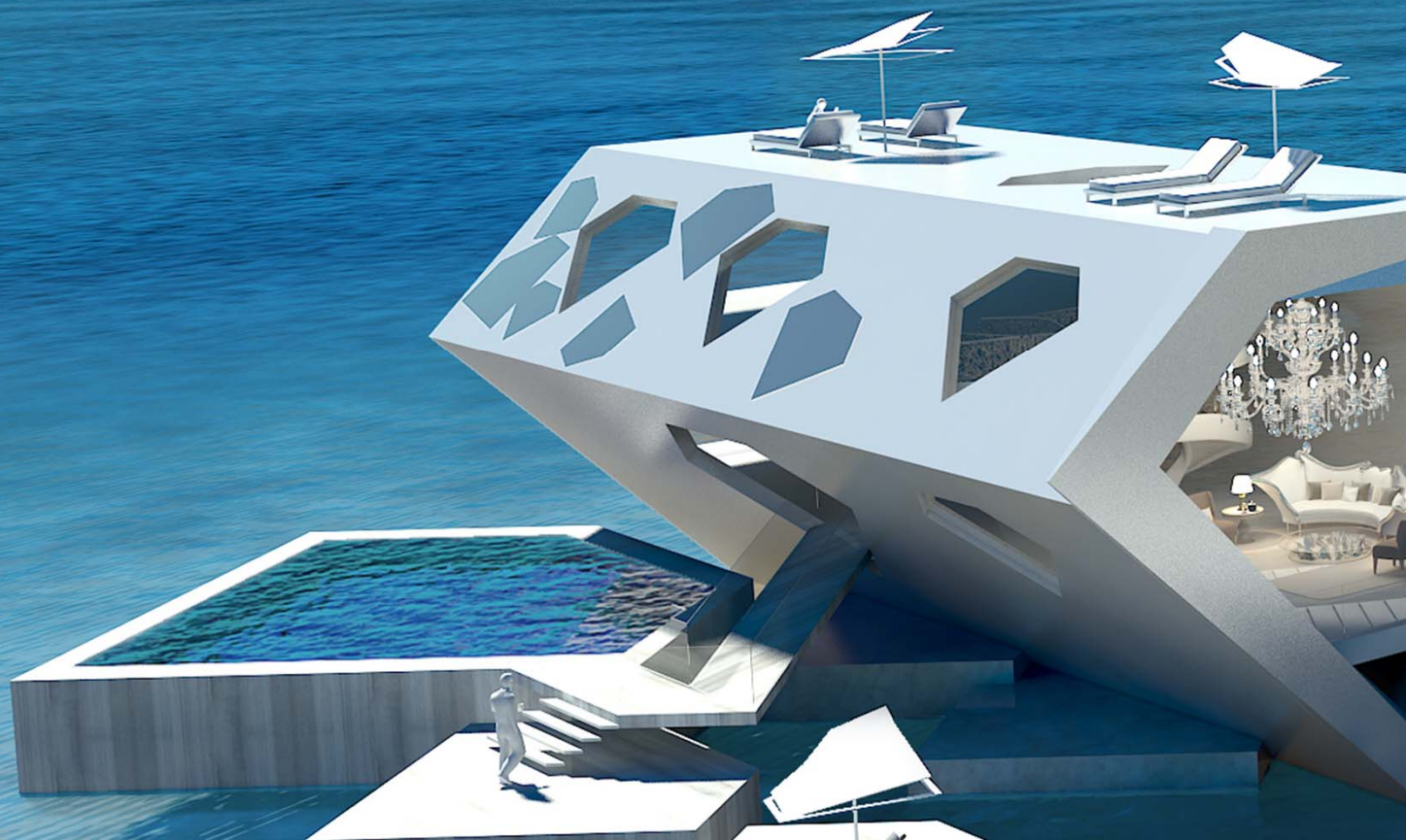
Diamond on infinity pool

M&J
MARQUES & JORDY





M&J
MARQUES & JORDY





M&J
MARQUES & JORDY



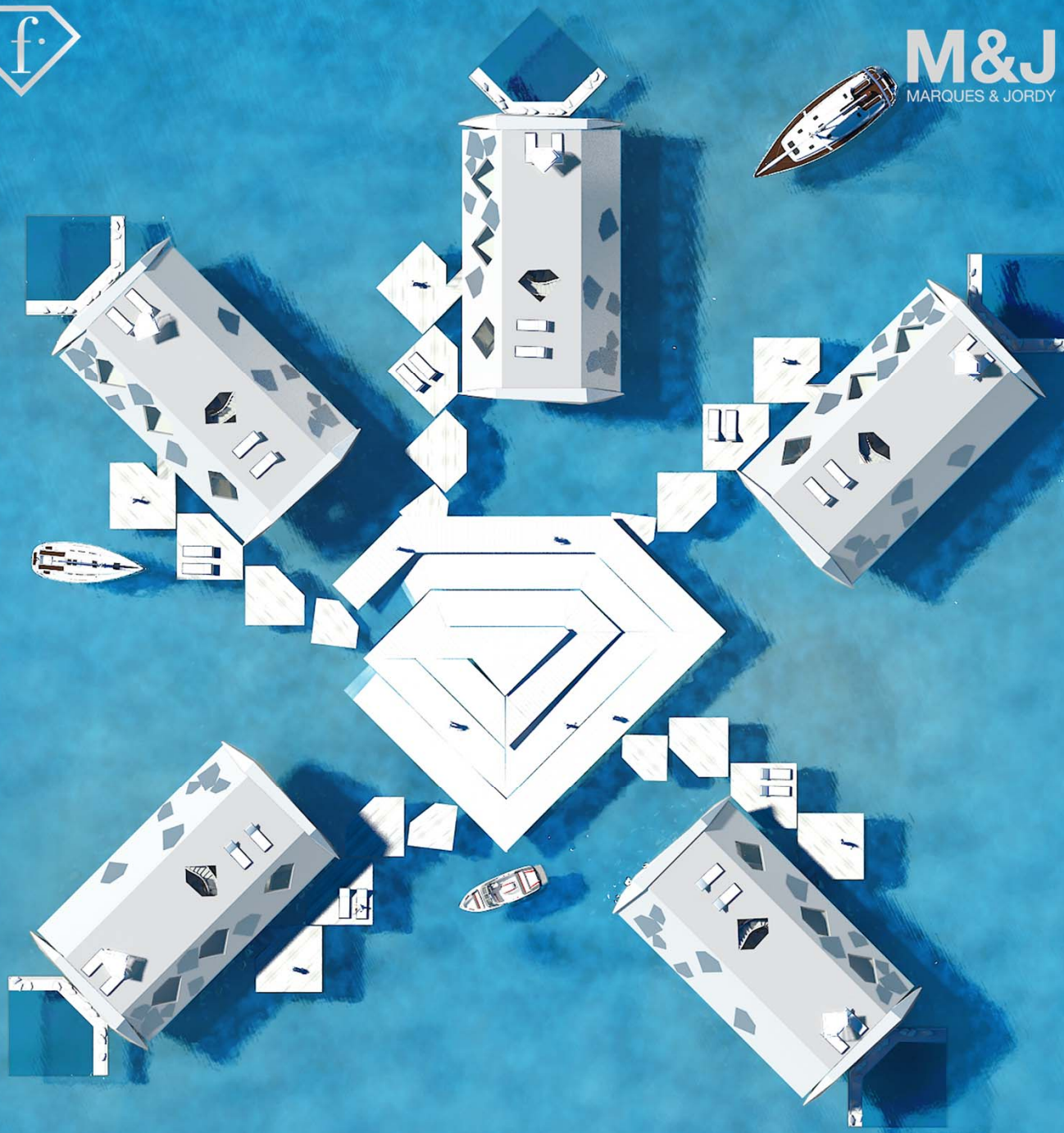


M&J
MARQUES & JORDY





M&J
MARQUES & JORDY



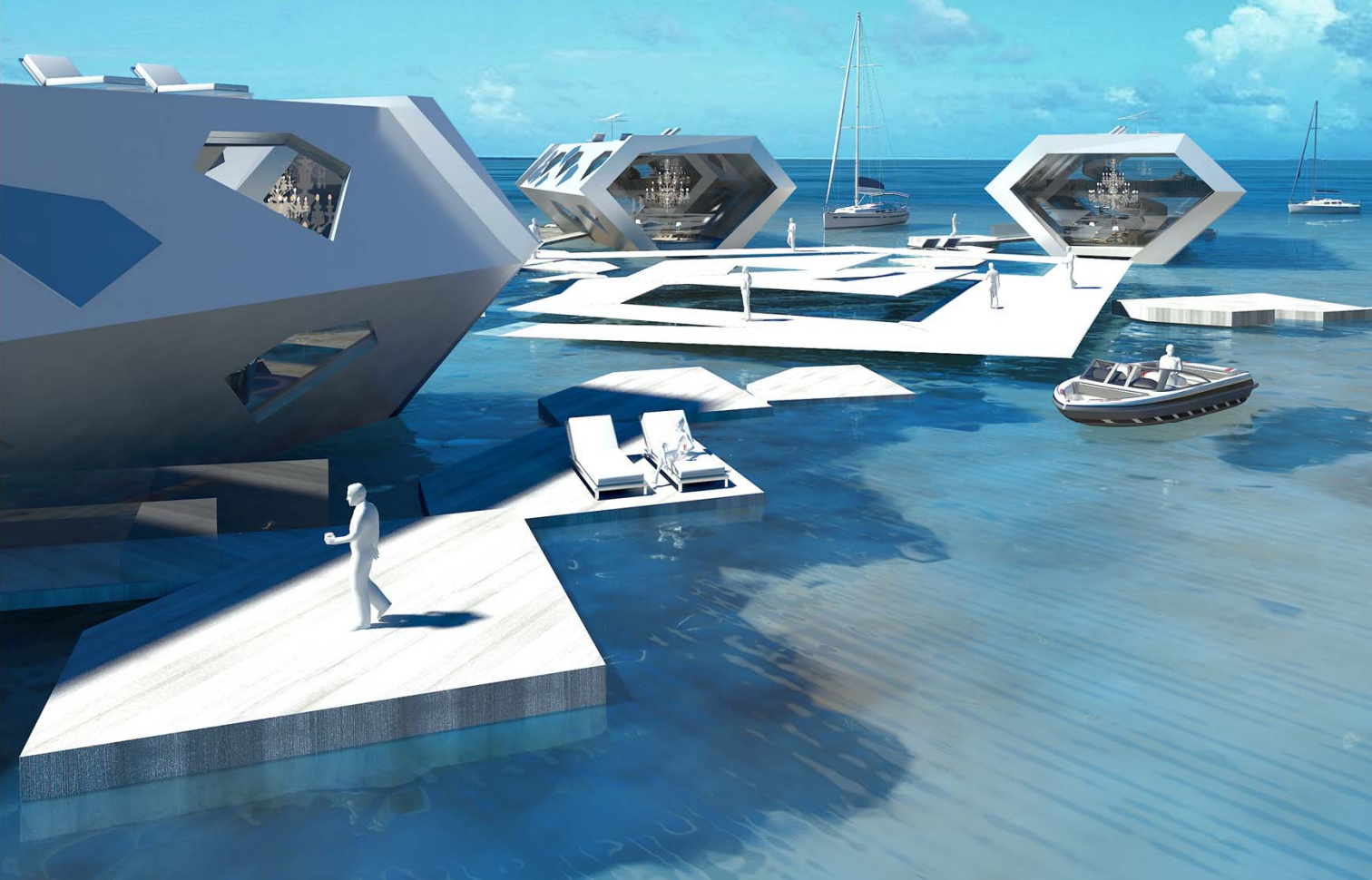


M&J
MARQUES & JORDY



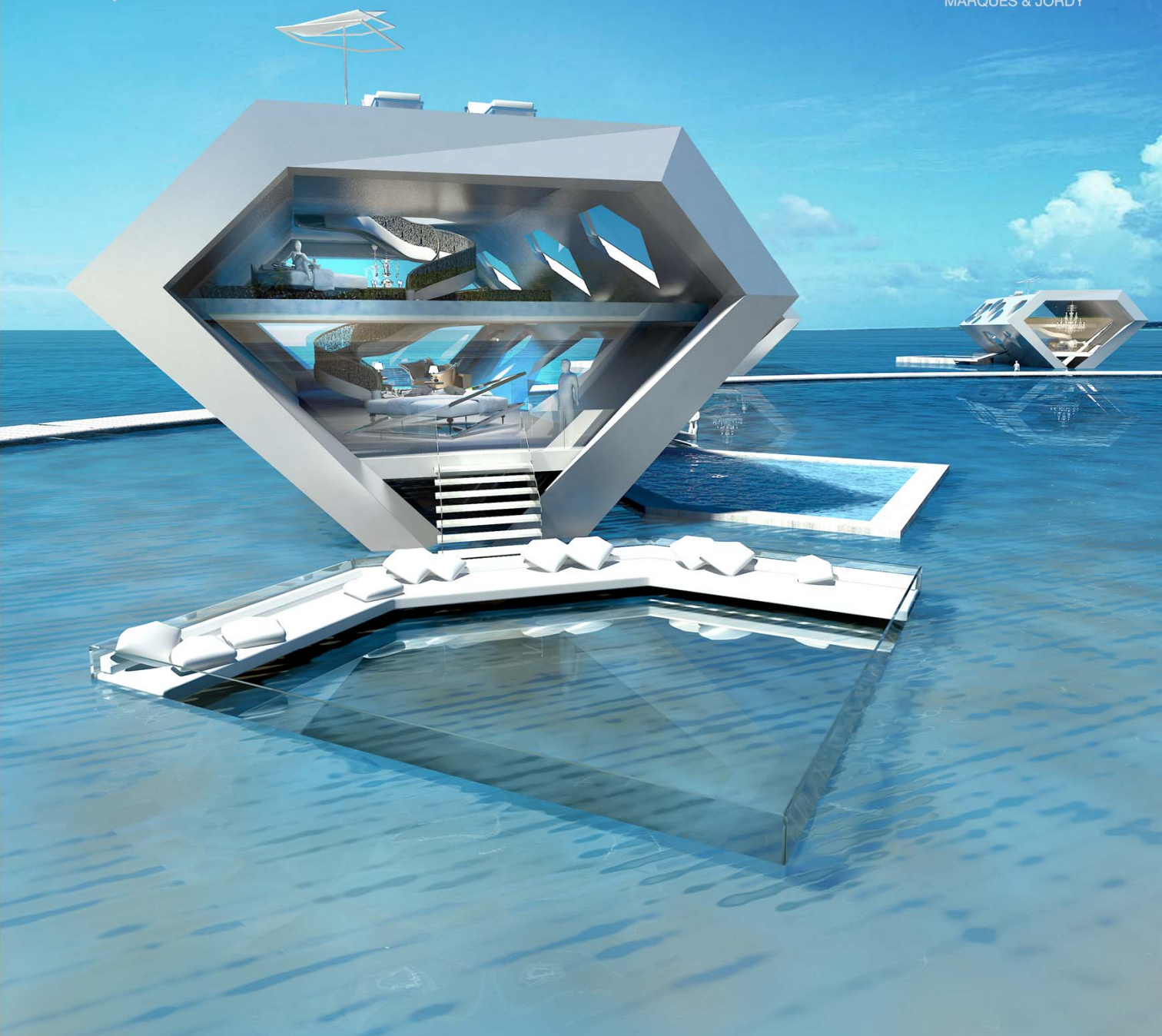


M&J
MARQUES & JORDY



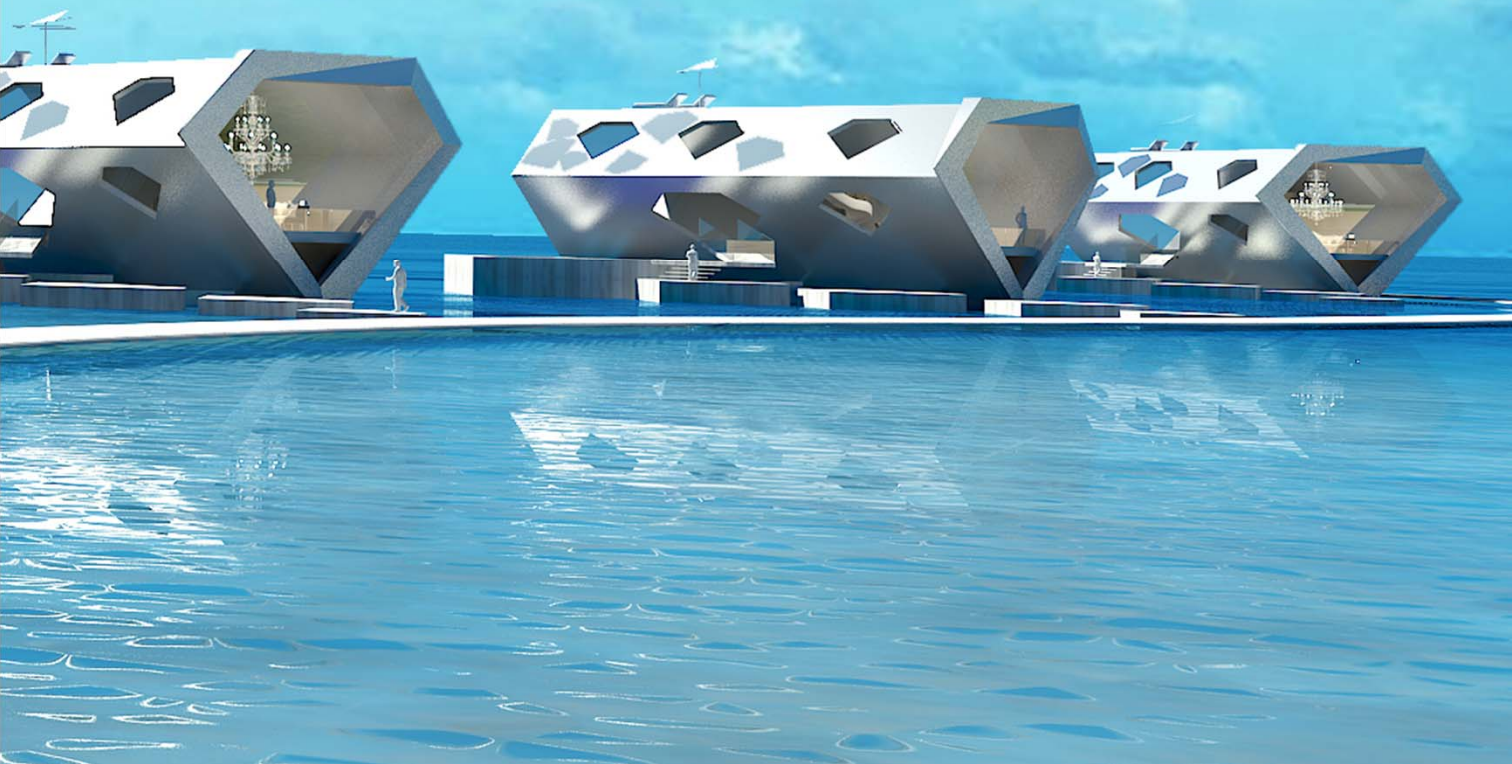


M&J
MARQUES & JORDY



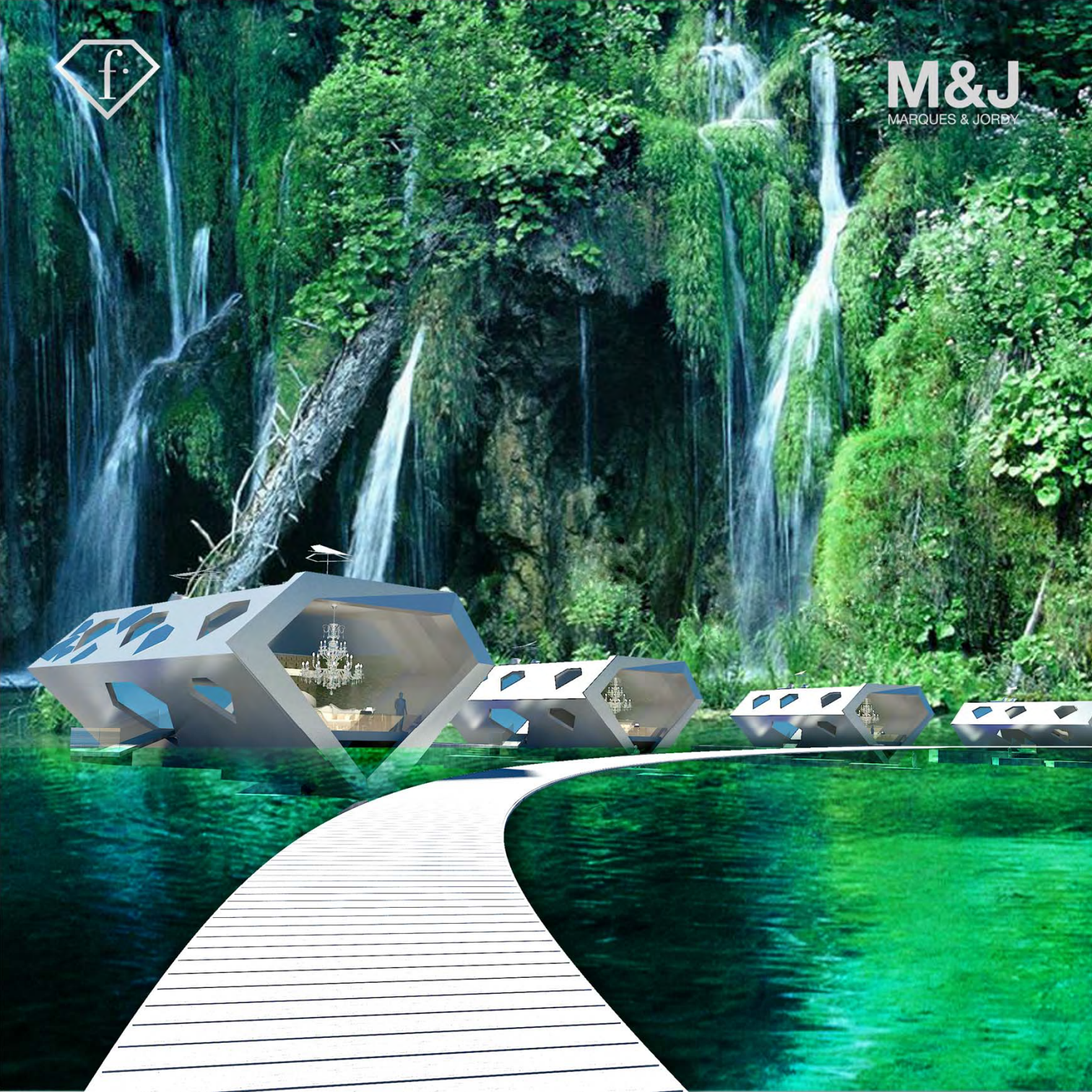


M&J
MARQUES & JORDY





M&J
MARQUES & JORDY





M&J
MARQUES & JORDY





M&J
MARQUES & JORDY





M&J
MARQUES & JORDY





M&J
MARQUES & JORDY





M&J
MARQUES & JORDY





M&J
MARQUES & JORDY





M&J
MARQUES & JORDY



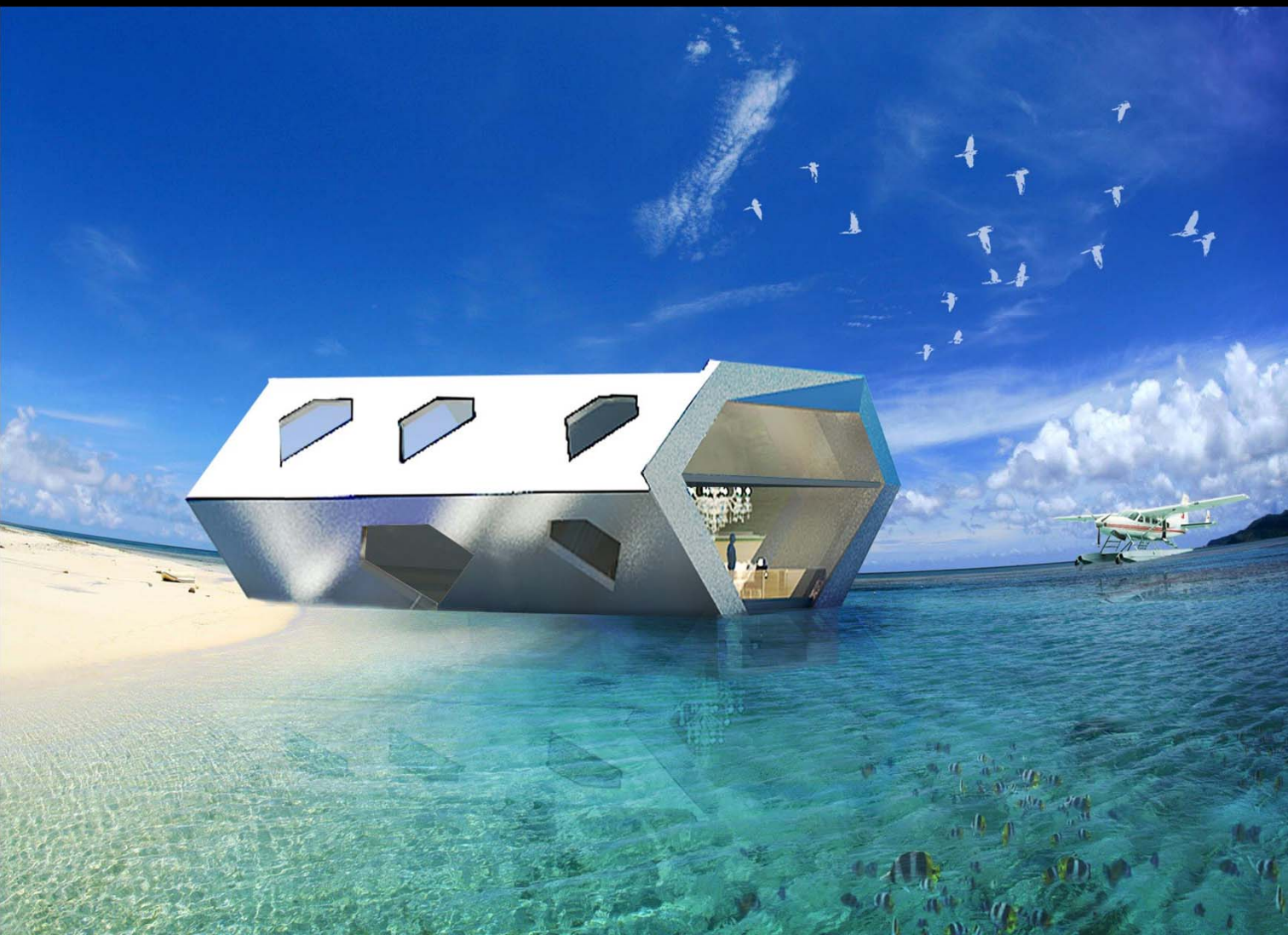


M&J
MARQUES & JORDY





M&J
MARQUES & JORDY





Façade material options - Metal panels -

M&J
MARQUES & JORDY





Façade material options - Local Wood -

M&J
MARQUES & JORDY





Façade material options - Precast concrete -

M&J
MARQUES & JORDY





Prefabricated Diamond Building

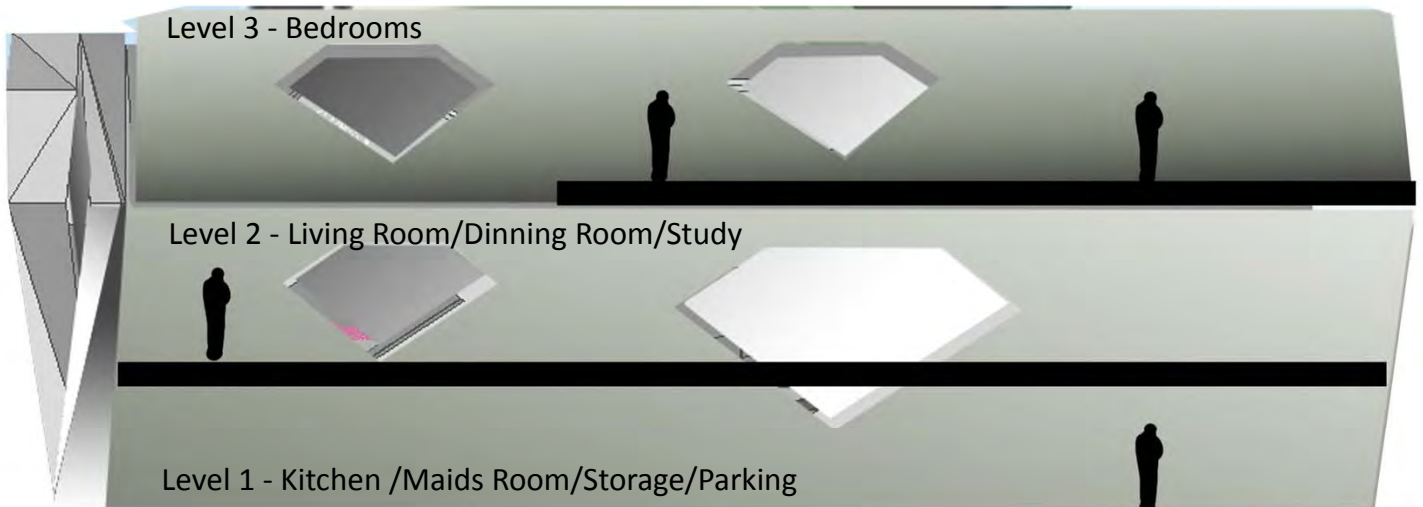
M&J
MARQUES & JORDY





Section Diagram

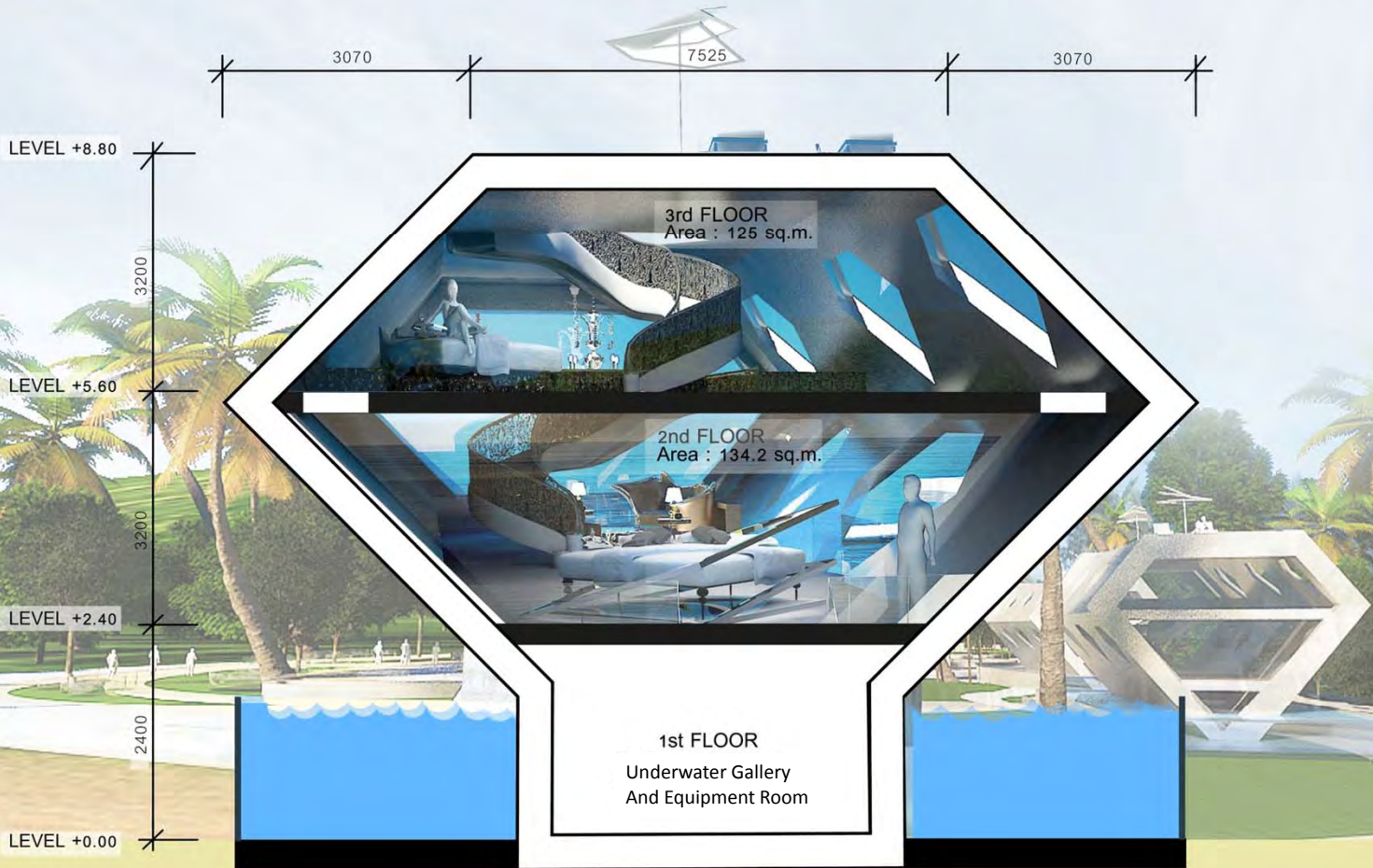
M&J
MARQUES & JORDY





Cross Section

M&J
MARQUES & JORDY



Swimming pool around Fashion Diamond Cabana

- Efficient use of land
- Optimised footprint
- Pool Areas under sunlight and shaded



Longitudinal Section

M&J
MARQUES & JORDY



Swimming pool around Fashion Diamond Cabana

- Underwater Gallery
- Improved natural cooling
- Diamond floating on water
visual effect



Elevation Diagram

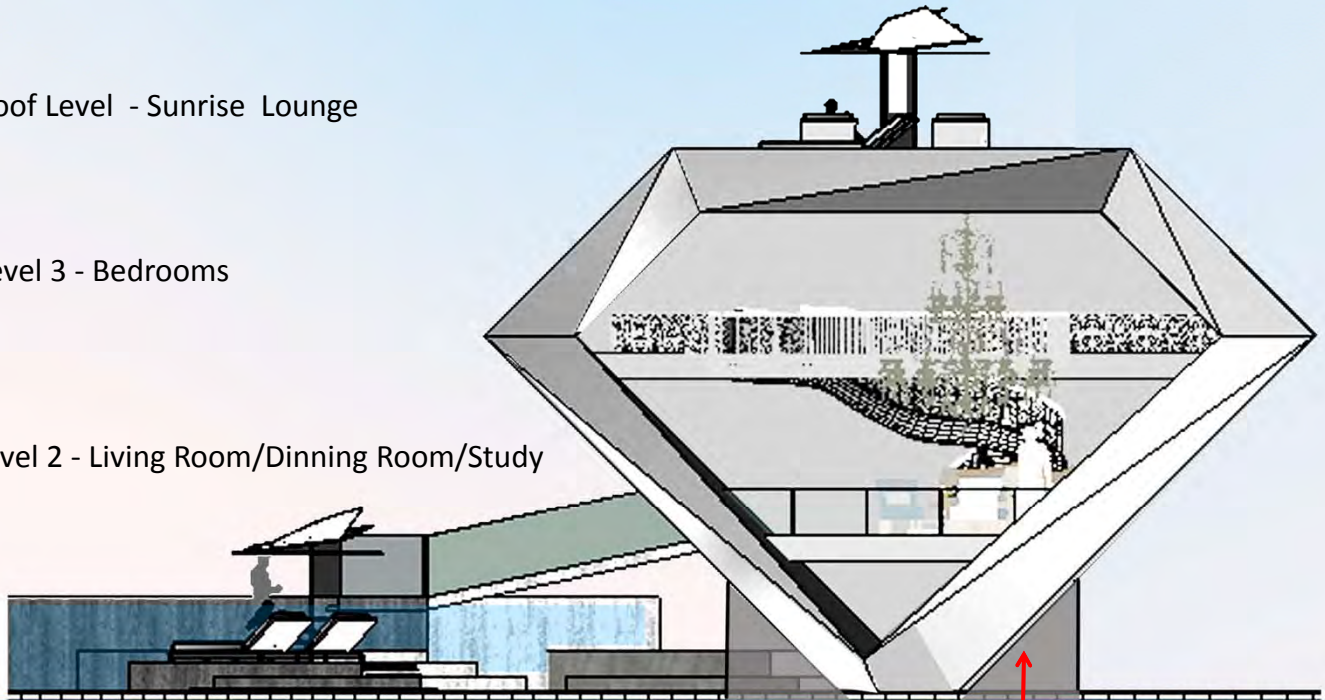
M&J
MARQUES & JORDY

Roof Level - Sunrise Lounge

Level 3 - Bedrooms

Level 2 - Living Room/Dinning Room/Study

Level 1 Kitchen /Maids
Room/Storage/
Service Rooms



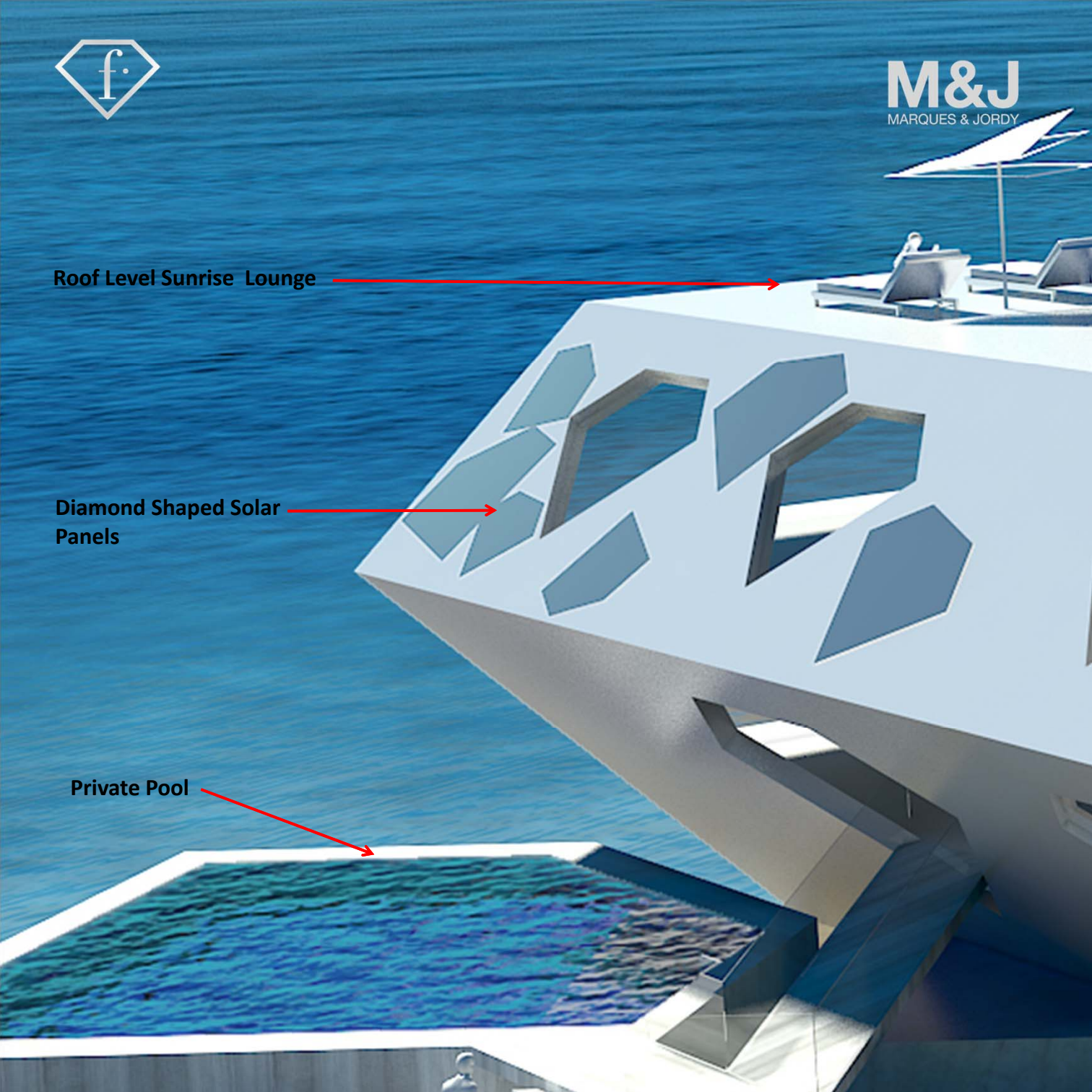


M&J
MARQUES & JORDY

Roof Level Sunrise Lounge

**Diamond Shaped Solar
Panels**

Private Pool

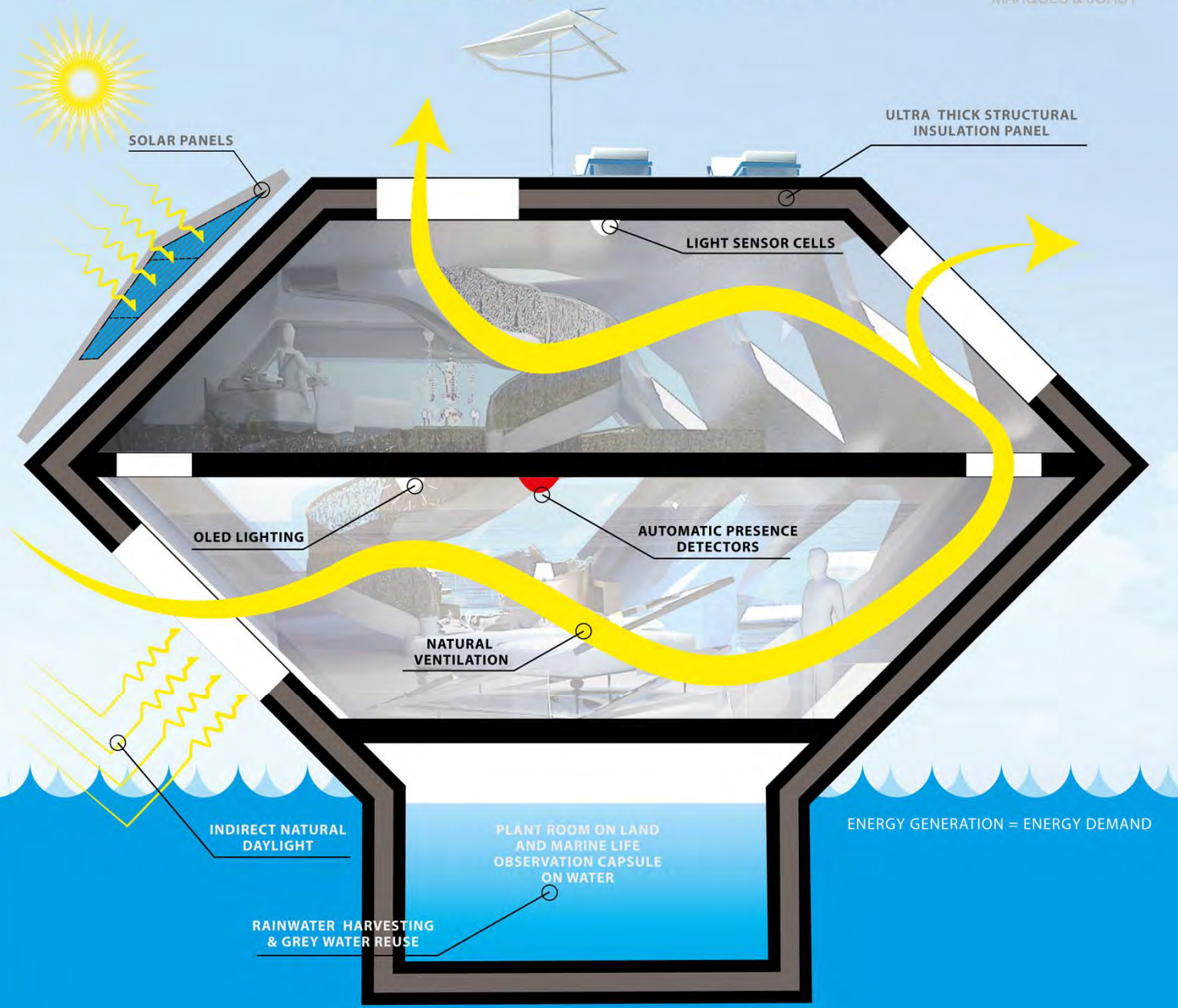




ENERGY PERFORMANCE [Eco-efficient design]

NET ZERO [0%] ENERGY CONSUMPTION

M&J
MARQUES & JORDY



SOLAR PANELS

ULTRA THICK STRUCTURAL INSULATION PANEL

LIGHT SENSOR CELLS

OLED LIGHTING

AUTOMATIC PRESENCE DETECTORS

NATURAL VENTILATION

INDIRECT NATURAL DAYLIGHT

PLANT ROOM ON LAND AND MARINE LIFE OBSERVATION CAPSULE ON WATER

RAINWATER HARVESTING & GREY WATER REUSE

ENERGY GENERATION = ENERGY DEMAND

CROSS SECTION



ENERGY PERFORMANCE [Eco-efficient design]

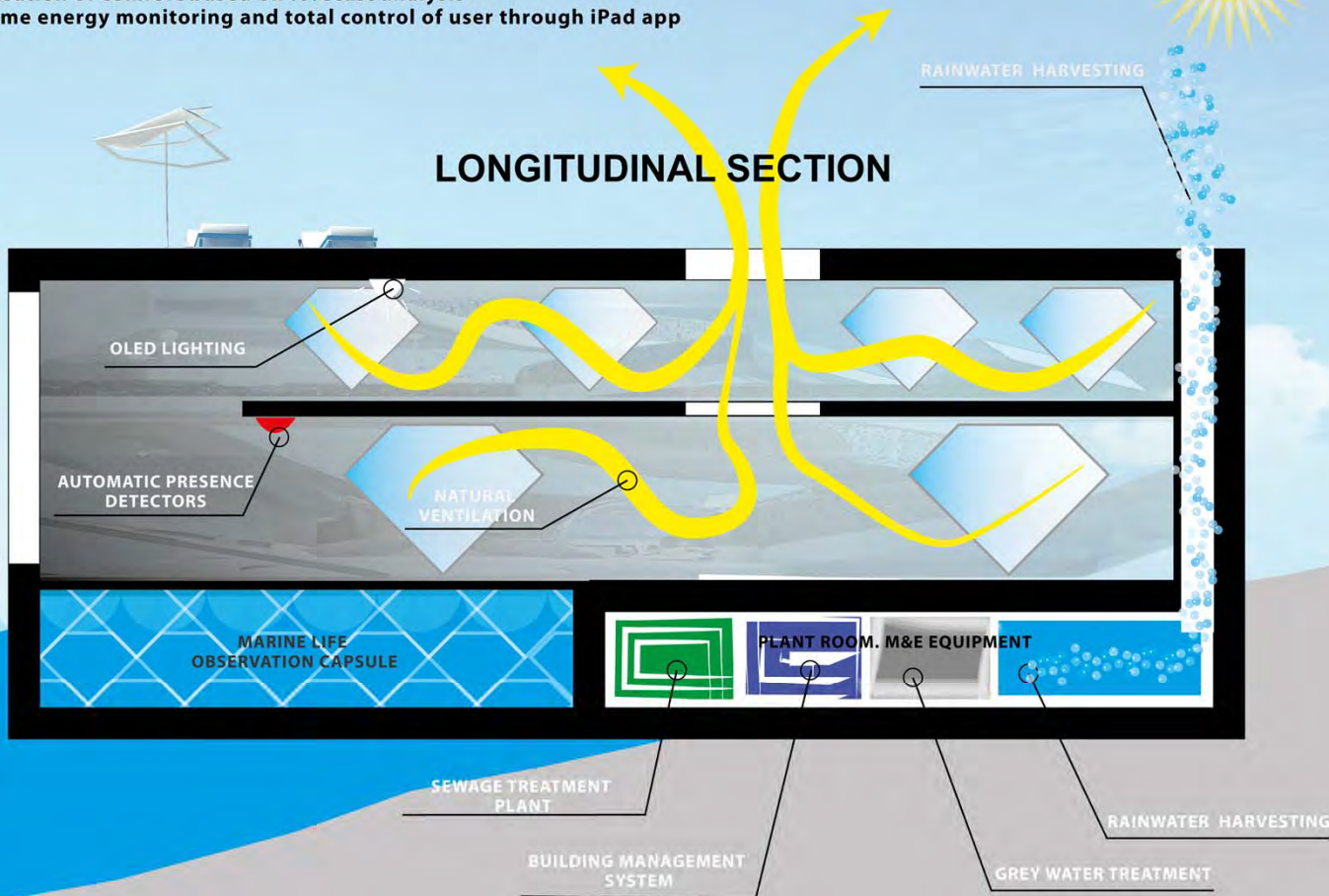
NET ZERO [0%] ENERGY CONSUMPTION

[] CENTRALISED BUILDING MANAGEMENT SYSTEM

- Sensors of presence, light, temperature and thermostats to detect variables
- Automatic activation of equipment when outside comfort range
- More efficient control of light intensity and air conditions
- Optimisation of comfort based on forecast analysis
- Real-time energy monitoring and total control of user through iPad app

[] WATER

- Rainwater harvesting
- Recycling and treatment of greywater



[] ELECTRICITY

- Prevalent use of daylighting. Reduced demand
- Use of latest OLED technology. SSL lighting
- Use of photovoltaic panels with power tracking system

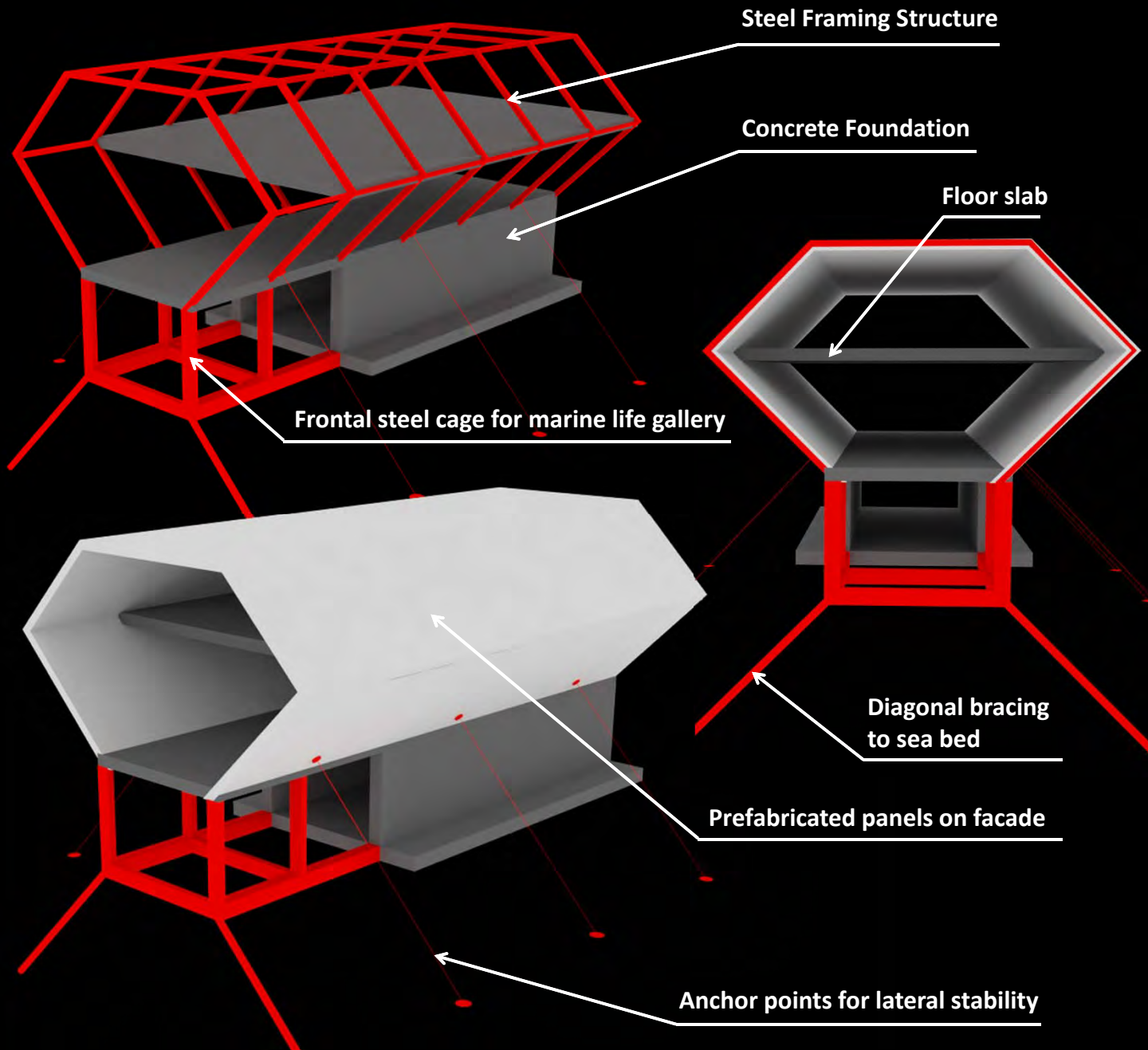
[] VENTILATION

- Airflow circulation through openings at 2 levels
- Natural ventilation and cooling
- Thermal Ultra thick structural insulation panels



Structure

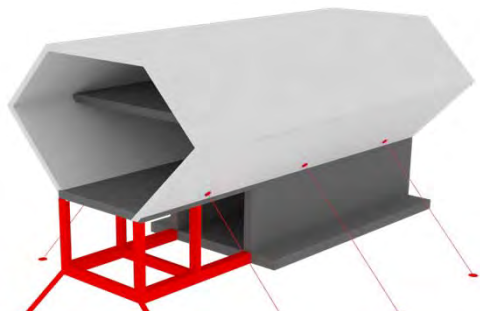
M&J
MARQUES & JORDY





Pricing & Cost estimation

M&J
MARQUES & JORDY



80.000 US\$ -> Shell and main sub structure
130.000 US\$ -> Full unit


Manufacturer: Guiping Yong Sheng ship manufacture company


SOLAR PANELS							
company	website	contact	e-mail	Tel	products(customizable)	specification	price(USD)
Ningbo Hui Wang Photovoltaic Technology co.,LTD	http://cxxwsun.cn.alibaba.com	Mr Wang Jiandong	beenbird@126.com	86 0574-63522211 / 86 18858041493		Module Dimension H × W × D (mm):1956x992x50	270.00
DPL Energy	http://www.dpl-energy.com/en/main.asp	Ms Zhao Jufen	orange@dpl-energy.com	86 0592-5621172 / 86 13313855075		350*290*17 type: XF-10M18	1.42/watt
AIR CONDITIONING UNIT							
company	website	contact	e-mail	Tel	products(customizable)	specification	price(USD)
Guangzhou Hao Ming Equipment co.,LTD	http://haomingac.cn.alibaba.com/	Ms Cai		84480839-8002		3604*2300*2250 (mm) type:30RB(Q)802G	unavailable
COMPOSTING TOILET							
company	website	contact	e-mail	Tel	products(customizable)	specification	price(USD)
Funing Fu Wang Da plastic-steel factory	http://www.jsfwd.com/	Mr Gu pinglang	469475302@qq.com	86 0515-87394199 / 86 13961921386		2890*2000*3990(cm) temperature: -20 - 60 (℃)	7926.00




Pricing & Cost estimation


M&J
MARQUES & JORDY

INCINERATION TOILET							
company	website	contact	e-mail	Tel	products(customizable)	specification	price(USD)
-	-	-	-	-		Incineration toilet	1268.00

CHEMICAL TOILET							
company	website	contact	e-mail	Tel	products(customizable)	specification	price(USD)
-	-	-	-	-		Portable chemical toilet	4756.00

FAÇADE MATERIALS FROM SHIP MANUFACTURERS							
company	website	contact	e-mail	Tel	products(customizable)	specification	price(USD)
Anyang Song Yuan trade co.,Ltd	http://sysm08.cn.alibaba.com	Mr Li Zeqing		86 0372-2152001		12mm-24mm (mm) type:235B 345C/D	646/ton
Anyang Lida shuanghai trade co.,Ltd	http://detail.china.alibaba.com/offer/262619404.html	Mr liu Guoyong		86 0372-3183555		6mm-35mm (mm) type:BV	650/ton

SOLAR THERMAL PANELS FOR WATER HEATING							
company	website	contact	e-mail	Tel	products(customizable)	specification	price(USD)
Guangzhou Tianzi Technology co.,Ltd	http://detail.china.alibaba.com/offer/88053084.html						570.00

SOLAR A/C SYSTEM							
company	website	contact	e-mail	Tel	products(customizable)	specification	price(USD)
Haining Sanneng Solar air condition co.,ltd	http://detail.china.alibaba.com/offer/1094345160.html	mr wu ying		86-573-87300073 /86 13505733322			600.00




Pricing & Cost estimation


M&J
MARQUES & JORDY

company	website	contact	e-mail	Tel	products(customizable)	specification	price(USD)
DPL Energy	http://detail.china.alibaba.com/offer/857249845.html	ms Zhao Jufen	orange@dpl-energy.com	86 0592-5621172 / 86 13313855075			1897.00

INDIVIDUAL DESALINATION WATER UNIT

company	website	contact	e-mail	Tel	products(customizable)	specification	price(USD)
Cangzhou Blue Ocean equipment co.,Ltd	http://detail.china.alibaba.com	Mr Zhang yunliang	blueocean-wang@qq.com	86 0317-3512885 3512886 / 86 13932707517		300L/hours	7115.00

COMMUNAL DESALINATION WATER UNIT Reverse osmosis type

company	website	contact	e-mail	Tel	products(customizable)	specification	price(USD)
Wuxi Te Lei Meng Environmental Protection Equipment co.,Ltd	http://vxjhsc1.cn.alibaba.com	Ms zhang yunqin	svzvq@yahoo.com.cn	86 0510-87820566 / 87860121		80*35*40 (cm) (FA-100T/H)	44390.00



M&J
MARQUES & JORDY

DESIGN TEAM



Yu Jordy Fu

President & Group Creative Director

Jordy is trained as both an artist and an architect, graduating from Central Saint Martin's College of Arts and Design with a first class degree in Spatial Design, followed by a Master of Arts degree in Architecture from the Royal College of Art London. Yu Jordy Fu had her first solo art exhibition at Beijing Capital Museum at age of six, her artworks have been published into two books in China and her design project was exhibited at the Venice Architecture Biennial. Jordy worked at Future Systems on various cultural, educational, infrastructure projects; before joining the London office of Skidmore, Owings & Merrill as a senior design architect on various large-scale mixed-use projects in Russia and Middle East.

Jordy then worked as a creative director for the UAE pavilion Shanghai expo 2010. Yu Jordy Fu's expertise include architecture, interior design and furniture design encompassing hospitality, residential, retail and work place sectors of real estate development. In 2009-2011, Jordy was the design leader of the dwp team on the iconic mixed-use developments in China and creative director for all Fashion TV projects, including the F hotel, Love Cafe, F nightclub. Jordy is also an artist, her art pieces were exhibited at the London Design Museum, London Fashion Week, and the Hong Kong Arts Centre. her own sustainable product collection was sold across Europe and published worldwide. Jordy won the RFP outstanding individual award for architecture in 2011. In 2012 Jordy exhibited at the Hamburg Art Week and talked on TED in Shanghai. Jordy's dream is to make this world a better place through design.



Raquel Marques

Director of Architecture

Raquel Marques is a Portuguese architect and urban designer, her designs aim to improve the relationship between society and the environment thus contributing to a better future.

Raquel graduated with a Diploma in Architecture from Portugal and holds an MSc in Urban Design from the prestigious Bartlett School of Architecture at the University College of London, UK. She has a broad range of experience in large urban design schemes having worked on a number of major mixed use projects across Europe, Russia & the Middle East.

Raquel is a lead architect for a widely publicized urban design and mixed-use redevelopment project in southwest London – the Nine Elms regeneration plan which incorporates the New American Embassy and the iconic Battersea Power Station. In 2007, she co-founded Marques & Jordy, together with Yu Jordy Fu; a London based studio focused on contemporary art and design.



Oscar Martinez

Managing Director

With a unique international profile, Oscar Martinez has been managing and developing state-of-the-art projects around the world, from London to Dubai, Brussels or Spain. Graduated in both 'Tech. Architecture' and 'Engineering' from Madrid, Spain and 'Architecture: Computing & Design' from London, he explores innovation through areas of generative design and complex geometry, making use of the latest 3D virtual techniques, BIM and parametric modelling. His professional experience includes working as Design Architect for SOM, Skidmore, Owings & Merrill in London, becoming part of the Digital Design Specialist Group, where he developed from a sustainable iconic skyscraper in Tyrol, Austria, to high-rise office and hotel buildings in Moscow and St. Petersburg, Russia or large-scale luxury residential developments in London

His leading position in the International Business sector later took him to work for the Embassy of Spain in Dubai, managing economic & commercial affairs in the UAE, Qatar and Middle East region, working in foreign trade, competitive intelligence, market analysis, international project tenders, and strategic institutional and business partnerships. His broad experience includes a constant focus on sustainability and eco-efficient design from the early concept stage, shaping him as a reference in the field and working for the most exclusive clients, recently being specially appointed by the European Commission to improve the energetic performance of its buildings.



Jon Sealey

Design Director

Graduating from Manchester School of Architecture and with over 9 years professional experience Jon has completed a diverse range of design projects ranging from high end retail, workplace and state of the art large scale architecture projects in Asia.

Jon started his career at imagination's London HQ working under respected designer Alister Petrie. He then worked on large scale retail developments as an architect in North England before moving to South Korea as a freelance designer.

Jon moved to Thailand in 2004 joining A49 Group as a Senior Designer on retail and high end hospitality projects. During his time at Design Worldwide Partnership, Jon worked with the international team on high end retail and residential projects and large scale masterplan developments in China. He also worked in the hospitality studio working on projects in India and China. Jon was the leading designer for the FTV love cafe and night clubs as well as Lilanz Retail Stores.

As an Architect and Interior Designer Jon's passion is focused on creating breathtaking design and developing new parametric modeling techniques to explore and fuse the boundaries between art and architecture.

MARQUES & JORDY

London